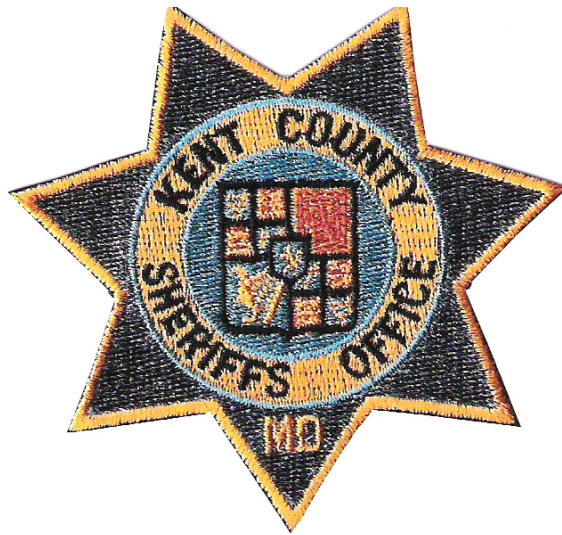


“2016”

Kent County  
Sheriff's Office



ANNUAL  
STATISTICAL  
REPORT



## Greetings:

We are very proud of the level of service which the Kent County Sheriff's Office delivered to the citizens of the County during 2016. We are dedicated to maintaining a safe and secure environment for the citizens of Kent County. Statistics alone, however, do not tell the full story of our accomplishments. We have made significant progress in many areas which demonstrate our commitment to our vision:

***The Kent County Sheriff's Office will be a first-class law enforcement agency, delivering superior service to the citizens of Kent County.***

1. Law Enforcement Accreditation. In 2003 the Kent County Sheriff's Office became the first Eastern Shore Sheriff's Office to achieve accreditation from the Commission on Accreditation for Law Enforcement Agencies (CALEA). Your Sheriff's Office remains in compliance with more than 464 law enforcement "best practices." We now proudly display the CALEA logo on our uniforms and marked vehicles. On November 22, 2015, the Kent County Sheriff's Office was successful in being awarded their fifth Certificate of Re-Accreditation.
2. Narcotics Enforcement Team. In September 2002, the Sheriff's Office organized its own Narcotics Unit in order to increase accountability in this important area. In year 2013, the NET team began the year with two (2) Deputies assigned to the unit. During 2016, thirteen (13) search and seizure warrants were executed by the NET Team resulting in twenty-four (24) arrests for possession or distribution of narcotics.
3. Victim/Witness Services. During the summer of 2006, a Victim/Witness Service Provider position was established at the Sheriff's Office utilizing a grant from the Governor's Office of Crime Control and Prevention. In November 2015 the office of the Victim/Witness Service Provider was re-located to the new office space of the Kent County State's Attorney where she will continue to provide services to witnesses and victims of crime in Kent County.
4. Commercial Vehicle Enforcement Team. In March 2009, the Kent County Sheriff's Office entered into a partnership with the Maryland State Highway Administration's Motor Carrier Division to enable KCSO Deputies to perform routine commercial vehicle enforcement inspections based on the North American Standard (NAS). At the conclusion of 2016, seven (7) Kent County Sheriff's Office Deputies had earned their certification through the Maryland State Police Commercial Vehicle Enforcement Division to perform routine commercial vehicle enforcement safety inspections based on the North American Standard. During 2016 these Deputies initiated and inspected 269 commercial vehicles.

We want to be fully responsive to the citizens of Kent County and serve you in the best way we can. We would welcome any comments or questions you have about this report. Please visit our website, [www.kentcounty.com/sheriff](http://www.kentcounty.com/sheriff) or call us on (410) 778-5946, email us at [sheriff@kentgov.org](mailto:sheriff@kentgov.org) or write us at:

**Kent County Sheriff's Office  
104 Vickers Drive, Unit B  
Chestertown, MD 21620**

### **MISSION STATEMENT AND CODE OF ETHICS**

The Kent County Sheriff's Office is a full service police agency responsible for enforcing the laws of the State of Maryland within the County. The Sheriff is also responsible for serving legal papers at the direction of the District and Circuit Courts of the County, providing security for the Kent County Courthouse, and enforcing the Courts' orders. The men and women of the Kent County Sheriff's Office are dedicated to service through superior performance. We believe mutual respect, trust and pride in our organization, combined with traditional values and innovative techniques, will ensure the community's right to a safe environment.

### **CORE VALUES**

The men and women of the Kent County Sheriff's Office are bound by a high standard of conduct, as exemplified in the following values:

**Life** - We believe the protection of life is our highest priority.

**Respect** - We believe in individual human dignity and the preservation of human rights under the rule and spirit of law, always treating others as we would like to be treated.

**Integrity** - We believe in maintaining the public trust by holding ourselves accountable to the highest moral and ethical standards.

**Fairness** - We believe in the delivery of service that provides fair and equal treatment to all citizens without regard to age, gender, race, creed, color, religion or national origin.

**Trust** - We believe in order to provide effective service we must develop and maintain the confidence of the community.

**Partnerships** - We believe in working in partnership with the community and each other to identify and resolve problems and issues which affect the safety of our citizens.

**Loyalty** - We believe in an allegiance to the community, to the organization and to each other.

**Professionalism** - We believe in delivering a level of service which will reflect the pride we have in our community and organization.

**Overall Performance Report**  
**January 1 thru December 31, 2016**  
**Compared to Calendar Year 2015**

	<b>2015</b>	<b>2016</b>	<b># Increase (Decrease)</b>	<b>% Increase (Decrease)</b>
Miles Driven	387,645	379,579	- 8,066	- 2.0%
Criminal Arrests	466	373	- 93	- 20.0%
Juvenile Arrests	11	20	+ 9	+ 82.0%
CDS Arrests	68	73	+ 5	+ 7.4%
DWI Arrests	96	85	- 11	- 11.5%
Traffic Accidents	55	48	- 7	- 12.7%
Traffic Warnings	7,634	7,574	- 60	- .8%
Traffic Citations	3,679	3,785	+ 106	+ 2.9%
Non-DWI Traffic Arrests	847	937	+ 90	+ 10.6%
Criminal Summons Served	77	85	+ 8	+ 10.4%
Part I Offenses	107	102	- 5	- 4.7%
Part II Offenses	206	218	+12	+ 5.8%
Call Assists	1,235	1,638	+ 403	+ 32.6%
Civil Process	1,946	1,986	+ 40	+ 2.0%
Court Security (hours)	987	1,049	+ 62	+ 6.3%
Calls for Service	20,082	20,462	+ 380	+ 19.0%

\*\*Includes Patrol and C.I.D.

### Crimes Handled by the Kent County Sheriff's Office<sup>1</sup>

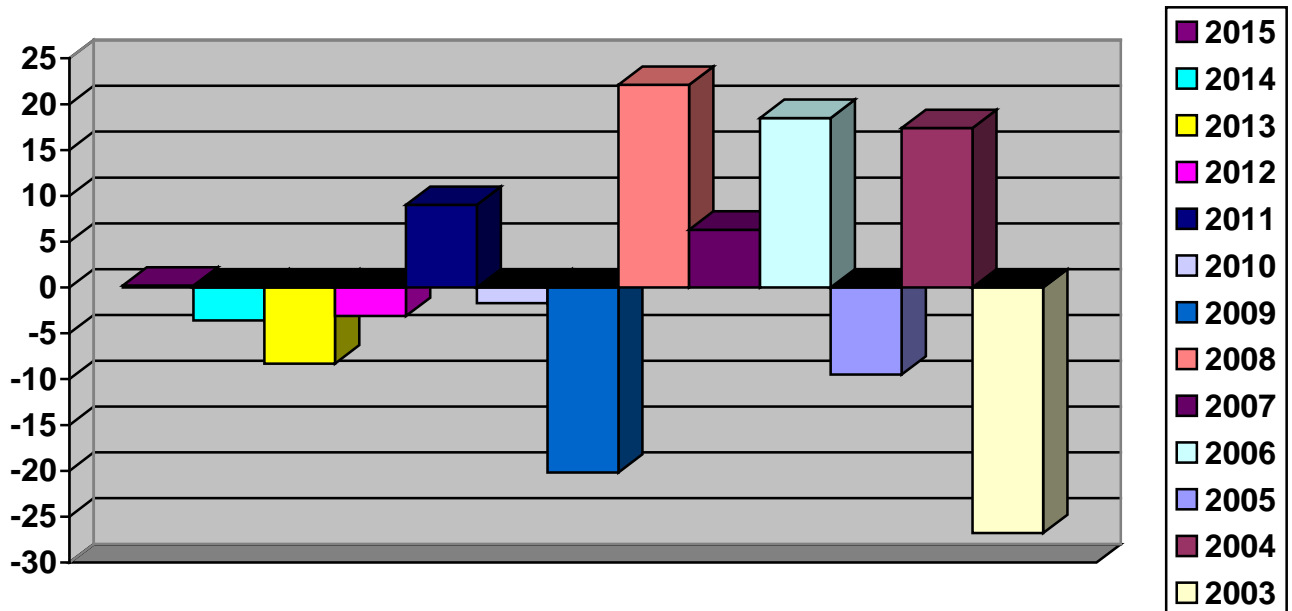
<b>PART I CRIMES</b>	<b>2015</b>	<b>2016</b>	<b>INCREASE / DECREASE</b>
Burglary	42	33	- 9
Robbery	3	1	- 2
Rogue & Vagabond	18	15	- 3
Theft	39	48	+ 9
Motor Vehicle Theft	0	1	+ 1
1 <sup>st</sup> Degree Assault	3	1	- 2
Rape	2	1	- 1
Attempted Murder	0	1	+ 1
Homicide	0	1	+ 1
<b>TOTAL PART I CRIMES</b>	<b>107</b>	<b>102</b>	<b>- 5</b>

<b>PART II CRIMES</b>	<b>2015</b>	<b>2016</b>	<b>INCREASE / DECREASE</b>
MDOP	10	11	+ 1
2 <sup>nd</sup> Degree Assault	31	36	+ 5
Sexual Offenses	3	2	+ 1
Reckless Endangerment	1	0	- 1
CDS Violations	44	65	+ 21
Trespassing	1	1	0
Physical Child Abuse	2	6	+ 4
Child Neglect	2	0	- 2
Resisting Arrest	2	0	- 2
Handgun Violation	1	2	+ 1
Bomb Threat	2	1	- 1
U/U Motor Vehicle	2	0	- 2
Disorderly Conduct	0	1	+ 1
Suicide	1	2	+ 1
Violation of Protective Order	6	2	- 4
Violation of Peace Order	1	0	- 1
Sex Offender Reg. Violation	1	1	0
Disrupt School Activity	0	2	+ 2
Animal Abuse	0	1	+ 1
DWI Arrests	96	85	- 12
<b>TOTAL PART II CRIMES</b>	<b>206</b>	<b>218</b>	<b>+ 12</b>

<b>TOTAL PART I &amp; II</b>	<b>313</b>	<b>320</b>	<b>+ 7</b>
------------------------------	------------	------------	------------

<sup>1</sup>Totals include Patrol and CID

The following information collected by the Maryland Uniform Crime Report describes crime patterns for 2003, 2004, 2005, 2006, 2007, 2008, 2009, 2010, 2011, 2012, 2013, 2014 and 2015 in Kent County, Maryland. The 2016 UCR report is not yet available.



- \* Year 2015 - Crime rate increased .2%
- \* Year 2014 - Crime rate declined 3.6%
- \* Year 2013 - Crime rate declined 8.3%
- \* Year 2012 - Crime rate declined 3.1%
- \* Year 2011 - Crime rate increased 9.0%
- \* Year 2010 - Crime rate declined 1.7%
- \* Year 2009 - Crime rate declined 20.2%
- \* Year 2008 - Crime rate increased 22.1%
- \* Year 2007 - Crime rate increased 6.3%
- \* Year 2006 - Crime rate increased 18.5%
- \* Year 2005 - Crime rate declined 9.5%
- \* Year 2004 - Crime rate increased 17.4%
- \* Year 2003 - Crime rate declined 26.8%

<sup>1</sup>Totals include Patrol and CID

**Speed Enforcement**

	2015	2016	Increase / Decrease
<b>Betterton</b>			
Warnings	77	77	0
Citations	22	46	+24
<b>Galena</b>			
Warnings	665	750	+85
Citations	443	569	+126
<b>Millington</b>			
Warnings	440	461	+21
Citations	320	330	+10

**Traffic Accidents**

	2015	2016	Increase / Decrease
<b>By Type</b>			
Property Damage Only	48	35	-13
Personal Injury	6	8	+2
Fatal	0	0	0
<b>Total</b>	<b>54</b>	<b>43</b>	<b>-11</b>
<b>By Location</b>			
U.S. Highways	0	1	+1
State Roads	21	16	-5
County Roads	31	23	-8
Municipal Roads	2	1	-1
Parking Lots	0	1	+1
OP Roads	0	0	0
Private Property	0	1	+1
<b>Total</b>	<b>54</b>	<b>43</b>	<b>-11</b>

**Commercial Vehicle Enforcement**  
**January 2016 – December 2016**

The Kent County Sheriff's Office began year 2016 with six (6) Deputies who were certified to perform Level III inspections of commercial vehicles based on the North American Standard (NAS). At the conclusion of 2016, seven (7) Kent County Sheriff's Office Deputies had earned their certification through the Maryland State Police Commercial Vehicle Enforcement Division to perform routine commercial vehicle enforcement safety inspections based on the North American Standard.

Commercial Vehicles Inspected	269
Log Book and/or Hours Violations	32
Disqualified Operators	6
Total Violations	93
Total Drivers placed "Out of Service"	24
Total Enforcement Hours	270.5

In addition to the violations listed above, KCSO certified inspectors issued numerous citations and warnings for other "lesser" CMV violations.

Also, in addition to conducting the Level III CMV inspections utilizing grant funds received from the State of Maryland, Kent County Sheriff's Office personnel conducted numerous CMV inspections during their scheduled patrol shifts. These numbers do not include passengers that were arrested for criminal offenses or warrants.



**Narcotics Enforcement Team**<sup>1</sup>

<b><u>Arrests</u></b>	<b><u>2016</u></b>
Adult Arrests	23
Juvenile Arrests	<u>0</u>
<b>Total Arrests</b>	<b>23</b>

**Number of Calls for Service..... 777**

**Search Warrants Written ..... 13**

**Search Warrants Executed ..... 13**

**Narcotics Seized**

Cocaine (Powder)	12.9 grams
Cocaine (Crack)	7.47 grams
Marijuana	42.0 grams
Heroin	21.85 grams
Prescription Pills:	68

**Other Items Seized**

Handgun  
 Numerous Smoking Devices  
 Numerous other paraphernalia items

---

<sup>1</sup>The Narcotics Enforcement Team reports to the Commander, Criminal Investigation Division (CID)